

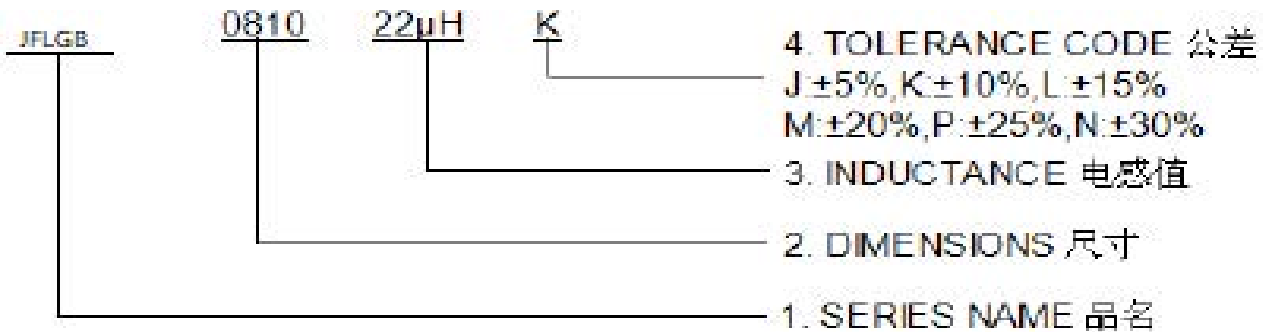
● **FEATURES 特性**

Contain high - frequency ferrite, comparatively large rated current
高频铁氧体

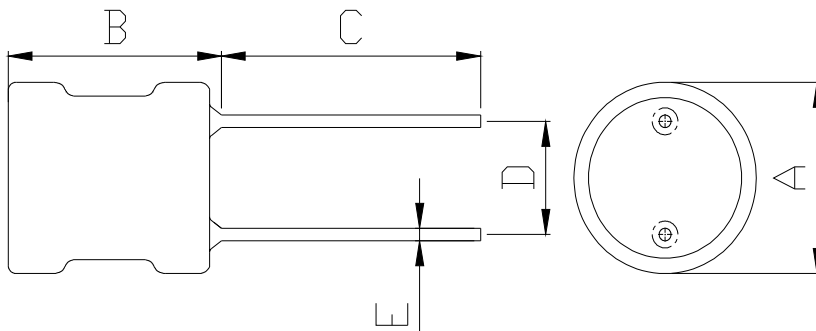
● **APPLICATIONS 用途**

Power supplies, DC-DC converters, TVs, VTRs, Computers; computer Peripherals, Telephones, Air-Conditioners, Home Electric Appliance, Electronic toys and games.
用于电源, DC-DC转换器; 电视机, 录相机, 计算机; 计算机周边设计; 电话机, 空气调节器, 家用电器, 电动玩具, 充电器等。

● **PART NUMBERING SYSTEM 品名系统**



● **SHAPES AND DIMENSIONS 外形尺寸 (Unit:mm)**



TYPE(型号)	A	B	C	D	E
JFLGB0304	4.5Max	6.5Max	15±2.0	1.5±0.5	0.48±0.05
JFLGB0406	6.0Max	9.0Max	15±2.0	2.0±0.5	0.48±0.05
JFLGB0507	6.5Max	9.5Max	15±2.0	2.5±0.5	0.6±0.05
JFLGB0608	8.0Max	11.0Max	15±2.0	3.0±0.5	0.6±0.05
JFLGB0707	9.0Max	10.0Max	15±2.0	5.0±0.5	0.6±0.05
JFLGB0810	11.0Max	13.0Max	15±2.0	5.0±0.5	0.6±0.05
JFLGB0912	12.0Max	15.0Max	15±2.0	5.0±0.5	0.8±0.1
JFLGB1012	13.0Max	16.0Max	15±2.0	6.0±0.5	0.8±0.1
JFLGB1016	13.0Max	20.0Max	15±2.0	6.0±0.5	0.8±0.1
JFLGB1216	15.0Max	20.0Max	15±2.0	7.5±1.0	0.8±0.1

● SPECIFICATION TABLE:

PART NUMBER 品名	INDUCTANCE (μ H) 电感值	DCR (Max.) (Ω) 直流电阻	Idc (Max.) (A) 额定电流	TEST FREQUENCY 测试频率
JFLGB0406-4R7M	4.7	0.120	1.50	100KHz, 0.25V
JFLGB0406-5R6M	5.6	0.120	1.20	100KHz, 0.25V
JFLGB0406-6R8M	6.8	0.130	1.00	100KHz, 0.25V
JFLGB0406-8R2M	8.2	0.140	0.80	100KHz, 0.25V
JFLGB0406-100K	10	0.150	0.70	1KHz,0.25V
JFLGB0406-120K	12	0.180	0.60	1KHz,0.25V
JFLGB0406-150K	15	0.200	0.65	1KHz,0.25V
JFLGB0406-180K	18	0.240	0.63	1KHz,0.25V
JFLGB0406-220K	22	0.260	0.60	1KHz,0.25V
JFLGB0406-270K	27	0.300	0.56	1KHz,0.25V
JFLGB0406-330K	33	0.400	0.55	1KHz,0.25V
JFLGB0406-390K	39	0.500	0.52	1KHz,0.25V
JFLGB0406-470K	47	0.600	0.50	1KHz,0.25V
JFLGB0406-560K	56	0.70	0.50	1KHz,0.25V
JFLGB0406-680K	68	1.00	0.48	1KHz,0.25V
JFLGB0406-820K	82	1.20	0.47	1KHz,0.25V
JFLGB0406-101K	100	1.40	0.45	1KHz,0.25V
JFLGB0406-121K	120	1.50	0.40	1KHz,0.25V
JFLGB0406-151K	150	1.60	0.35	1KHz,0.25V
JFLGB0406-181K	180	1.80	0.30	1KHz,0.25V
JFLGB0406-221K	220	2.00	0.24	1KHz,0.25V
JFLGB0406-271K	270	2.50	0.22	1KHz,0.25V
JFLGB0406-331K	330	3.00	0.20	1KHz,0.25V
JFLGB0406-391K	390	3.30	0.18	1KHz,0.25V
JFLGB0406-471K	470	3.50	0.18	1KHz,0.25V
JFLGB0406-561K	560	4.0	0.16	1KHz,0.25V
JFLGB0406-681K	680	6.0	0.15	1KHz,0.25V
JFLGB0406-821K	820	7.0	0.12	1KHz,0.25V
JFLGB0406-102K	1000	9.0	0.10	1KHz,0.25V
JFLGB0406-122K	1200	12	0.09	1KHz,0.25V
JFLGB0406-152K	1500	15	0.08	1KHz,0.25V
JFLGB0406-182K	1800	17	0.070	1KHz,0.25V
JFLGB0406-222K	2200	22	0.070	1KHz,0.25V
JFLGB0406-272K	2700	30	0.060	1KHz,0.25V
JFLGB0406-332K	3300	33	0.055	1KHz,0.25V

● SPECIFICATION TABLE:

PART NUMBER 品名	INDUCTANCE (μ H) 电感值	DCR (Max.) (Ω) 直流电阻	Idc (Max.) (A) 额定电流	TEST FREQUENCY 测试频率
JFLGB0507-4R7M	4.7	0.050	2.00	100KHz, 0.25V
JFLGB0507-6R8M	6.8	0.060	1.80	100KHz, 0.25V
JFLGB0507-100K	10	0.080	1.60	1KHz,0.25V
JFLGB0507-120K	12	0.10	1.60	1KHz,0.25V
JFLGB0507-150K	15	0.14	1.50	1KHz,0.25V
JFLGB0507-180K	18	0.15	1.20	1KHz,0.25V
JFLGB0507-220K	22	0.16	1.00	1KHz,0.25V
JFLGB0507-270K	27	0.20	0.90	1KHz,0.25V
JFLGB0507-330K	33	0.30	0.80	1KHz,0.25V
JFLGB0507-390K	39	0.40	0.75	1KHz,0.25V
JFLGB0507-470K	47	0.45	0.70	1KHz,0.25V
JFLGB0507-560K	56	0.50	0.65	1KHz,0.25V
JFLGB0507-680K	68	0.55	0.60	1KHz,0.25V
JFLGB0507-820K	82	0.60	0.55	1KHz,0.25V
JFLGB0507-101K	100	0.80	0.50	1KHz,0.25V
JFLGB0507-121K	120	1.00	0.48	1KHz,0.25V
JFLGB0507-151K	150	1.50	0.45	1KHz,0.25V
JFLGB0507-181K	180	1.80	0.42	1KHz,0.25V
JFLGB0507-221K	220	2.00	0.40	1KHz,0.25V
JFLGB0507-271K	270	2.30	0.35	1KHz,0.25V
JFLGB0507-331K	330	2.60	0.30	1KHz,0.25V
JFLGB0507-391K	390	2.80	0.28	1KHz,0.25V
JFLGB0507-471K	470	3.00	0.25	1KHz,0.25V
JFLGB0507-561K	560	3.50	0.25	1KHz,0.25V
JFLGB0507-681K	680	4.50	0.24	1KHz,0.25V
JFLGB0507-821K	820	5.0	0.20	1KHz,0.25V
JFLGB0507-102K	1000	6.0	0.18	1KHz,0.25V
JFLGB0507-122K	1200	8	0.16	1KHz,0.25V
JFLGB0507-152K	1500	9	0.15	1KHz,0.25V
JFLGB0507-182K	1800	10	0.14	1KHz,0.25V
JFLGB0507-222K	2200	12	0.10	1KHz,0.25V
JFLGB0507-272K	2700	16	0.09	1KHz,0.25V
JFLGB0507-332K	3300	20	0.08	1KHz,0.25V
JFLGB0507-392K	3900	24	0.07	1KHz,0.25V
JFLGB0507-472K	4700	26	0.060	1KHz,0.25V
JFLGB0507-562K	5600	28	0.055	1KHz,0.25V
JFLGB0507-682K	6800	30	0.050	1KHz,0.25V
JFLGB0507-822K	8200	40	0.045	1KHz,0.25V
JFLGB0507-103K	10000	60	0.040	1KHz,0.25V

● SPECIFICATION TABLE:

PART NUMBER 品名	INDUCTANCE (μ H) 电感值	DCR (Max.) (Ω) 直流电阻	Idc (Max.) (A) 额定电流	TEST FREQUENCY 测试频率
JFLGB0608-100K	10	0.09	2.00	1KHz,0.25V
JFLGB0608-120K	12	0.10	1.90	1KHz,0.25V
JFLGB0608-150K	15	0.11	1.80	1KHz,0.25V
JFLGB0608-180K	18	0.12	1.60	1KHz,0.25V
JFLGB0608-220K	22	0.12	1.50	1KHz,0.25V
JFLGB0608-270K	27	0.17	1.20	1KHz,0.25V
JFLGB0608-330K	33	0.19	1.00	1KHz,0.25V
JFLGB0608-390K	39	0.22	0.95	1KHz,0.25V
JFLGB0608-470K	47	0.23	0.90	1KHz,0.25V
JFLGB0608-560K	56	0.29	0.85	1KHz,0.25V
JFLGB0608-680K	68	0.37	0.80	1KHz,0.25V
JFLGB0608-820K	82	0.39	0.75	1KHz,0.25V
JFLGB0608-101K	100	0.44	0.70	1KHz,0.25V
JFLGB0608-121K	120	0.64	0.65	1KHz,0.25V
JFLGB0608-151K	150	0.73	0.60	1KHz,0.25V
JFLGB0608-181K	180	0.82	0.55	1KHz,0.25V
JFLGB0608-221K	220	0.92	0.50	1KHz,0.25V
JFLGB0608-271K	270	1.3	0.45	1KHz,0.25V
JFLGB0608-331K	330	1.5	0.40	1KHz,0.25V
JFLGB0608-391K	390	1.8	0.35	1KHz,0.25V
JFLGB0608-471K	470	2.3	0.30	1KHz,0.25V
JFLGB0608-561K	560	3.0	0.28	1KHz,0.25V
JFLGB0608-681K	680	3.25	0.25	1KHz,0.25V
JFLGB0608-821K	820	4.16	0.23	1KHz,0.25V
JFLGB0608-102K	1000	5.00	0.21	1KHz,0.25V
JFLGB0608-122K	1200	6.50	0.20	1KHz,0.25V
JFLGB0608-152K	1500	8.00	0.17	1KHz,0.25V
JFLGB0608-182K	1800	9.00	0.16	1KHz,0.25V
JFLGB0608-222K	2200	9.50	0.14	1KHz,0.25V
JFLGB0608-272K	2700	10.00	0.12	1KHz,0.25V
JFLGB0608-332K	3300	11.00	0.10	1KHz,0.25V
JFLGB0608-392K	3900	13.00	0.09	1KHz,0.25V
JFLGB0608-472K	4700	17.00	0.080	1KHz,0.25V
JFLGB0608-562K	5600	20.00	0.070	1KHz,0.25V
JFLGB0608-682K	6800	27.00	0.060	1KHz,0.25V
JFLGB0608-822K	8200	32.00	0.055	1KHz,0.25V
JFLGB0608-103K	10000	38.00	0.050	1KHz,0.25V
JFLGB0608-123K	12000	43.00	0.045	1KHz,0.25V
JFLGB0608-153K	15000	65.00	0.040	1KHz,0.25V

● SPECIFICATION TABLE:

PART NUMBER 品名	INDUCTANCE (μ H) 电感值	DCR (Max.) (Ω) 直流电阻	Idc (Max.) (A) 额定电流	TEST FREQUENCY 测试频率
JFLGB0707-4R7M	4.7	0.025	3.00	100KHz, 0.25V
JFLGB0707-6R8M	6.8	0.030	2.50	100KHz, 0.25V
JFLGB0707-100K	10	0.065	2.40	1KHz,0.25V
JFLGB0707-120K	12	0.075	2.30	1KHz,0.25V
JFLGB0707-150K	15	0.09	2.20	1KHz,0.25V
JFLGB0707-180K	18	0.12	2.00	1KHz,0.25V
JFLGB0707-220K	22	0.13	1.80	1KHz,0.25V
JFLGB0707-270K	27	0.14	1.60	1KHz,0.25V
JFLGB0707-330K	33	0.15	1.50	1KHz,0.25V
JFLGB0707-390K	39	0.20	1.30	1KHz,0.25V
JFLGB0707-470K	47	0.22	1.20	1KHz,0.25V
JFLGB0707-560K	56	0.25	1.10	1KHz,0.25V
JFLGB0707-680K	68	0.32	1.00	1KHz,0.25V
JFLGB0707-820K	82	0.35	0.95	1KHz,0.25V
JFLGB0707-101K	100	0.40	0.90	1KHz,0.25V
JFLGB0707-121K	120	0.55	0.85	1KHz,0.25V
JFLGB0707-151K	150	0.80	0.80	1KHz,0.25V
JFLGB0707-181K	180	0.90	0.70	1KHz,0.25V
JFLGB0707-221K	220	1.00	0.65	1KHz,0.25V
JFLGB0707-271K	270	1.20	0.60	1KHz,0.25V
JFLGB0707-331K	330	1.30	0.50	1KHz,0.25V
JFLGB0707-391K	390	1.40	0.45	1KHz,0.25V
JFLGB0707-471K	470	1.50	0.38	1KHz,0.25V
JFLGB0707-561K	560	1.80	0.35	1KHz,0.25V
JFLGB0707-681K	680	2.50	0.30	1KHz,0.25V
JFLGB0707-821K	820	3.70	0.28	1KHz,0.25V
JFLGB0707-102K	1000	4.00	0.26	1KHz,0.25V
JFLGB0707-122K	1200	4.50	0.24	1KHz,0.25V
JFLGB0707-152K	1500	5.60	0.22	1KHz,0.25V
JFLGB0707-182K	1800	6.50	0.21	1KHz,0.25V
JFLGB0707-222K	2200	7.70	0.20	1KHz,0.25V
JFLGB0707-272K	2700	9.60	0.18	1KHz,0.25V
JFLGB0707-332K	3300	12.00	0.17	1KHz,0.25V
JFLGB0707-392K	3900	14.0	0.16	1KHz,0.25V
JFLGB0707-472K	4700	20.0	0.15	1KHz,0.25V
JFLGB0707-562K	5600	24.0	0.12	1KHz,0.25V
JFLGB0707-682K	6800	28.0	0.10	1KHz,0.25V
JFLGB0707-822K	8200	32.0	0.09	1KHz,0.25V
JFLGB0707-103K	10000	36.0	0.08	1KHz,0.25V
JFLGB0707-123K	12000	48.0	0.070	1KHz,0.25V
JFLGB0707-153K	15000	56.0	0.060	1KHz,0.25V

● SPECIFICATION TABLE:

PART NUMBER 品名	INDUCTANCE (μ H) 电感值	DCR (Max.) (Ω) 直流电阻	Idc (Max.) (A) 额定电流	TEST FREQUENCY 测试频率
JFLGB0810-3R3M	3.3	0.04	4.20	100KHz,0.25V
JFLGB0810-3R9M	3.9	0.05	4.20	100KHz,0.25V
JFLGB0810-4R7M	4.7	0.06	4.00	100KHz,0.25V
JFLGB0810-5R6M	5.6	0.06	3.80	100KHz,0.25V
JFLGB0810-6R8M	6.8	0.06	3.80	100KHz,0.25V
JFLGB0810-8R2M	8.2	0.06	3.60	100KHz,0.25V
JFLGB0810-100K	10	0.07	3.50	1KHz,0.25V
JFLGB0810-120K	12	0.08	3.20	1KHz,0.25V
JFLGB0810-150K	15	0.09	3.00	1KHz,0.25V
JFLGB0810-180K	18	0.10	2.80	1KHz,0.25V
JFLGB0810-220K	22	0.12	2.50	1KHz,0.25V
JFLGB0810-270K	27	0.14	2.20	1KHz,0.25V
JFLGB0810-330K	33	0.16	2.00	1KHz,0.25V
JFLGB0810-390K	39	0.16	1.80	1KHz,0.25V
JFLGB0810-470K	47	0.18	1.50	1KHz,0.25V
JFLGB0810-560K	56	0.20	1.40	1KHz,0.25V
JFLGB0810-680K	68	0.23	1.30	1KHz,0.25V
JFLGB0810-820K	82	0.27	1.20	1KHz,0.25V
JFLGB0810-101K	100	0.30	1.20	1KHz,0.25V
JFLGB0810-121K	120	0.33	1.00	1KHz,0.25V
JFLGB0810-151K	150	0.46	0.80	1KHz,0.25V
JFLGB0810-181K	180	0.51	0.60	1KHz,0.25V
JFLGB0810-221K	220	0.62	0.55	1KHz,0.25V
JFLGB0810-271K	270	0.65	0.45	1KHz,0.25V
JFLGB0810-331K	330	0.79	0.40	1KHz,0.25V
JFLGB0810-391K	390	0.91	0.40	1KHz,0.25V
JFLGB0810-471K	470	1.1	0.35	1KHz,0.25V
JFLGB0810-561K	560	1.2	0.30	1KHz,0.25V
JFLGB0810-681K	680	1.5	0.28	1KHz,0.25V
JFLGB0810-821K	820	1.7	0.25	1KHz,0.25V
JFLGB0810-102K	1000	2.0	0.22	1KHz,0.25V
JFLGB0810-122K	1200	2.5	0.20	1KHz,0.25V
JFLGB0810-152K	1500	2.9	0.18	1KHz,0.25V
JFLGB0810-182K	1800	3.5	0.15	1KHz,0.25V
JFLGB0810-222K	2200	4.2	0.14	1KHz,0.25V
JFLGB0810-272K	2700	5.1	0.13	1KHz,0.25V
JFLGB0810-332K	3300	6.1	0.12	1KHz,0.25V
JFLGB0810-392K	3900	7.8	0.11	1KHz,0.25V
JFLGB0810-472K	4700	8.0	0.100	1KHz,0.25V
JFLGB0810-562K	5600	10.0	0.095	1KHz,0.25V
JFLGB0810-682K	6800	14.0	0.090	1KHz,0.25V
JFLGB0810-822K	8200	15.0	0.085	1KHz,0.25V
JFLGB0810-103K	10000	20.0	0.080	1KHz,0.25V
JFLGB0810-123K	12000	22.0	0.070	1KHz,0.25V
JFLGB0810-153K	15000	24.0	0.060	1KHz,0.25V

● SPECIFICATION TABLE:

PART NUMBER 品名	INDUCTANCE (μ H) 电感值	DCR (Max.) (Ω) 直流电阻	Idc (Max.) (A) 额定电流	TEST FREQUENCY 测试频率
JFLGB0912-100K	10	0.04	4.00	1KHz,0.25V
JFLGB0912-120K	12	0.045	3.80	1KHz,0.25V
JFLGB0912-150K	15	0.05	3.50	1KHz,0.25V
JFLGB0912-180K	18	0.06	3.20	1KHz,0.25V
JFLGB0912-220K	22	0.07	3.00	1KHz,0.25V
JFLGB0912-270K	27	0.10	2.80	1KHz,0.25V
JFLGB0912-330K	33	0.12	2.50	1KHz,0.25V
JFLGB0912-390K	39	0.12	2.00	1KHz,0.25V
JFLGB0912-470K	47	0.13	1.90	1KHz,0.25V
JFLGB0912-560K	56	0.14	1.80	1KHz,0.25V
JFLGB0912-680K	68	0.15	1.70	1KHz,0.25V
JFLGB0912-820K	82	0.16	1.60	1KHz,0.25V
JFLGB0912-101K	100	0.25	1.50	1KHz,0.25V
JFLGB0912-121K	120	0.28	1.20	1KHz,0.25V
JFLGB0912-151K	150	0.30	1.00	1KHz,0.25V
JFLGB0912-181K	180	0.45	0.70	1KHz,0.25V
JFLGB0912-221K	220	0.50	0.60	1KHz,0.25V
JFLGB0912-271K	270	0.65	0.50	1KHz,0.25V
JFLGB0912-331K	330	0.85	0.45	1KHz,0.25V
JFLGB0912-391K	390	0.95	0.40	1KHz,0.25V
JFLGB0912-471K	470	1.1	0.35	1KHz,0.25V
JFLGB0912-561K	560	1.2	0.30	1KHz,0.25V
JFLGB0912-681K	680	1.3	0.25	1KHz,0.25V
JFLGB0912-821K	820	1.5	0.20	1KHz,0.25V
JFLGB0912-102K	1000	2.0	0.20	1KHz,0.25V
JFLGB0912-122K	1200	2.3	0.18	1KHz,0.25V
JFLGB0912-152K	1500	2.9	0.17	1KHz,0.25V
JFLGB0912-182K	1800	3.3	0.16	1KHz,0.25V
JFLGB0912-222K	2200	4.5	0.15	1KHz,0.25V
JFLGB0912-272K	2700	5.5	0.14	1KHz,0.25V
JFLGB0912-332K	3300	5.7	0.13	1KHz,0.25V
JFLGB0912-392K	3900	6.5	0.12	1KHz,0.25V
JFLGB0912-472K	4700	7.2	0.12	1KHz,0.25V
JFLGB0912-562K	5600	9.5	0.11	1KHz,0.25V
JFLGB0912-682K	6800	12	0.10	1KHz,0.25V
JFLGB0912-822K	8200	14	0.10	1KHz,0.25V
JFLGB0912-103K	10000	16	0.09	1KHz,0.25V
JFLGB0912-123K	12000	18	0.09	1KHz,0.25V
JFLGB0912-153K	15000	21	0.08	1KHz,0.25V
JFLGB0912-183K	18000	25	0.08	1KHz,0.25V
JFLGB0912-223K	22000	33	0.07	1KHz,0.25V
JFLGB912-273K	27000	40	0.05	1KHz,0.25V
JFLGB0912-333K	33000	45	0.04	1KHz,0.25V

● SPECIFICATION TABLE:

PART NUMBER 品名	INDUCTANCE (μ H) 电感值	DCR (Max.) (Ω) 直流电阻	Idc (Max.) (A) 额定电流	TEST FREQUENCY 测试频率
JFLGB1012-3R3M	3.3	0.025	5.5	100KHz,0.45V
JFLGB1012-3R9M	3.9	0.030	5.0	100KHz,0.45V
JFLGB1012-4R7M	4.7	0.030	5.0	100KHz,0.45V
JFLGB1012-5R6M	5.6	0.040	4.8	100KHz,0.45V
JFLGB1012-6R8M	6.8	0.040	4.8	100KHz,0.45V
JFLGB1012-8R2M	8.2	0.045	4.5	100KHz,0.45V
JFLGB1012-100K	10	0.050	4.2	1KHz,0.45V
JFLGB1012-120K	12	0.050	4.0	1KHz,0.45V
JFLGB1012-150K	15	0.060	3.8	1KHz,0.45V
JFLGB1012-180K	18	0.070	3.8	1KHz,0.45V
JFLGB1012-220K	22	0.080	3.5	1KHz,0.45V
JFLGB1012-270K	27	0.090	3.2	1KHz,0.45V
JFLGB1012-330K	33	0.100	3.0	1KHz,0.45V
JFLGB1012-390K	39	0.120	2.5	1KHz,0.45V
JFLGB1012-470K	47	0.120	2.0	1KHz,0.45V
JFLGB1012-560K	56	0.140	1.8	1KHz,0.45V
JFLGB1012-680K	68	0.150	1.7	1KHz,0.45V
JFLGB1012-820K	82	0.160	1.6	1KHz,0.45V
JFLGB1012-101K	100	0.180	1.5	1KHz,0.45V
JFLGB1012-121K	120	0.200	1.4	1KHz,0.45V
JFLGB1012-151K	150	0.250	1.2	1KHz,0.45V
JFLGB1012-181K	180	0.280	1.0	1KHz,0.45V
JFLGB1012-221K	220	0.300	0.90	1KHz,0.45V
JFLGB1012-271K	270	0.420	0.80	1KHz,0.45V
JFLGB1012-331K	330	0.550	0.70	1KHz,0.45V
JFLGB1012-391K	390	0.600	0.60	1KHz,0.45V
JFLGB1012-471K	470	0.650	0.55	1KHz,0.45V
JFLGB1012-561K	560	0.750	0.50	1KHz,0.45V
JFLGB1012-681K	680	0.850	0.50	1KHz,0.45V
JFLGB1012-821K	820	1.100	0.40	1KHz,0.45V
JFLGB1012-102K	1000	1.400	0.30	1KHz,0.45V

● SPECIFICATION TABLE:

PART NUMBER 品名	INDUCTANCE (μ H) 电感值	DCR (Max.) (Ω) 直流电阻	Idc (Max.) (A) 额定电流	TEST FREQUENCY 测试频率
JFLGB1016-4R7M	4.7	0.020	5.8	100KHz,0.25V
JFLGB1016-5R6M	5.6	0.025	5.5	100KHz,0.25V
JFLGB1016-6R8M	6.8	0.025	5.4	100KHz,0.25V
JFLGB1016-8R2M	8.2	0.028	5.2	100KHz,0.25V
JFLGB1016-100K	10	0.035	5.0	1KHz,0.25V
JFLGB1016-120K	12	0.035	4.5	1KHz,0.25V
JFLGB1016-150K	15	0.040	4.0	1KHz,0.25V
JFLGB1016-180K	18	0.060	4.0	1KHz,0.25V
JFLGB1016-220K	22	0.080	3.8	1KHz,0.25V
JFLGB1016-270K	27	0.100	3.5	1KHz,0.25V
JFLGB1016-330K	33	0.100	3.5	1KHz,0.25V
JFLGB1016-390K	39	0.120	3.2	1KHz,0.25V
JFLGB1016-470K	47	0.120	3.0	1KHz,0.25V
JFLGB1016-560K	56	0.130	2.8	1KHz,0.25V
JFLGB1016-680K	68	0.140	2.5	1KHz,0.25V
JFLGB1016-820K	82	0.150	2.2	1KHz,0.25V
JFLGB1016-101K	100	0.180	2.0	1KHz,0.25V
JFLGB1016-121K	120	0.200	1.8	1KHz,0.25V
JFLGB1016-151K	150	0.220	1.6	1KHz,0.25V
JFLGB1016-181K	180	0.250	1.5	1KHz,0.25V
JFLGB1016-221K	220	0.300	1.5	1KHz,0.25V
JFLGB1016-271K	270	0.350	1.4	1KHz,0.25V
JFLGB1016-331K	330	0.600	1.3	1KHz,0.25V
JFLGB1016-391K	390	0.700	1.2	1KHz,0.25V
JFLGB1016-471K	470	0.800	1.0	1KHz,0.25V
JFLGB1016-561K	560	0.900	1.0	1KHz,0.25V
JFLGB1016-681K	680	1.000	0.9	1KHz,0.25V
JFLGB1016-821K	820	1.200	0.8	1KHz,0.25V
JFLGB1016-102K	1000	1.500	0.7	1KHz,0.25V

● SPECIFICATION TABLE:

PART NUMBER 品名	INDUCTANCE (μ H) 电感值	DCR (Max.) (Ω) 直流电阻	Idc (Max.) (A) 额定电流	TEST FREQUENCY 测试频率
JFLGB1216-330K	33	0.08	5.0	1KHz,0.25V
JFLGB1216-390K	39	0.10	4.5	1KHz,0.25V
JFLGB1216-470K	47	0.11	4.2	1KHz,0.25V
JFLGB1216-560K	56	0.12	4.0	1KHz,0.25V
JFLGB1216-680K	68	0.13	3.5	1KHz,0.25V
JFLGB1216-820K	82	0.14	3.3	1KHz,0.25V
JFLGB1216-101K	100	0.15	3.2	1KHz,0.25V
JFLGB1216-121K	120	0.16	3.0	1KHz,0.25V
JFLGB1216151K	150	0.17	2.7	1KHz,0.25V
JFLGB1216181K	180	0.18	2.5	1KHz,0.25V
JFLGB1216-221K	220	0.20	2.3	1KHz,0.25V
JFLGB1216-271K	270	0.30	2.0	1KHz,0.25V
JFLGB1216-331K	330	0.40	1.9	1KHz,0.25V
JFLGB1216-391K	390	0.50	1.8	1KHz,0.25V
JFLGB1216-471K	470	0.60	1.7	1KHz,0.25V
JFLGB1216-561K	560	0.70	1.6	1KHz,0.25V
JFLGB1216-681K	680	0.80	1.5	1KHz,0.25V
JFLGB1216-821K	820	0.90	1.4	1KHz,0.25V
JFLGB1216-102K	1000	1.00	1.3	1KHz,0.25V
JFLGB1216-152K	1500	1.50	1.0	1KHz,0.25V
JFLGB1216-182K	1800	2.00	0.8	1KHz,0.25V
JFLGB1216-222K	2200	3.00	0.7	1KHz,0.25V
JFLGB1216-272K	2700	4.50	0.6	1KHz,0.25V
JFLGB1216-332K	3300	6.00	0.5	1KHz,0.25V